

Elvis Presley Boulevard Improvements

City of Memphis, Tennessee



Elvis Presley Boulevard Project Update



May 15, 2014

Elvis Presley Boulevard Improvements

City of Memphis, Tennessee



Elvis Presley Boulevard Improvements

Project Map



NORTH
SEGMENT

MIDDLE
SEGMENT

SOUTH
SEGMENT

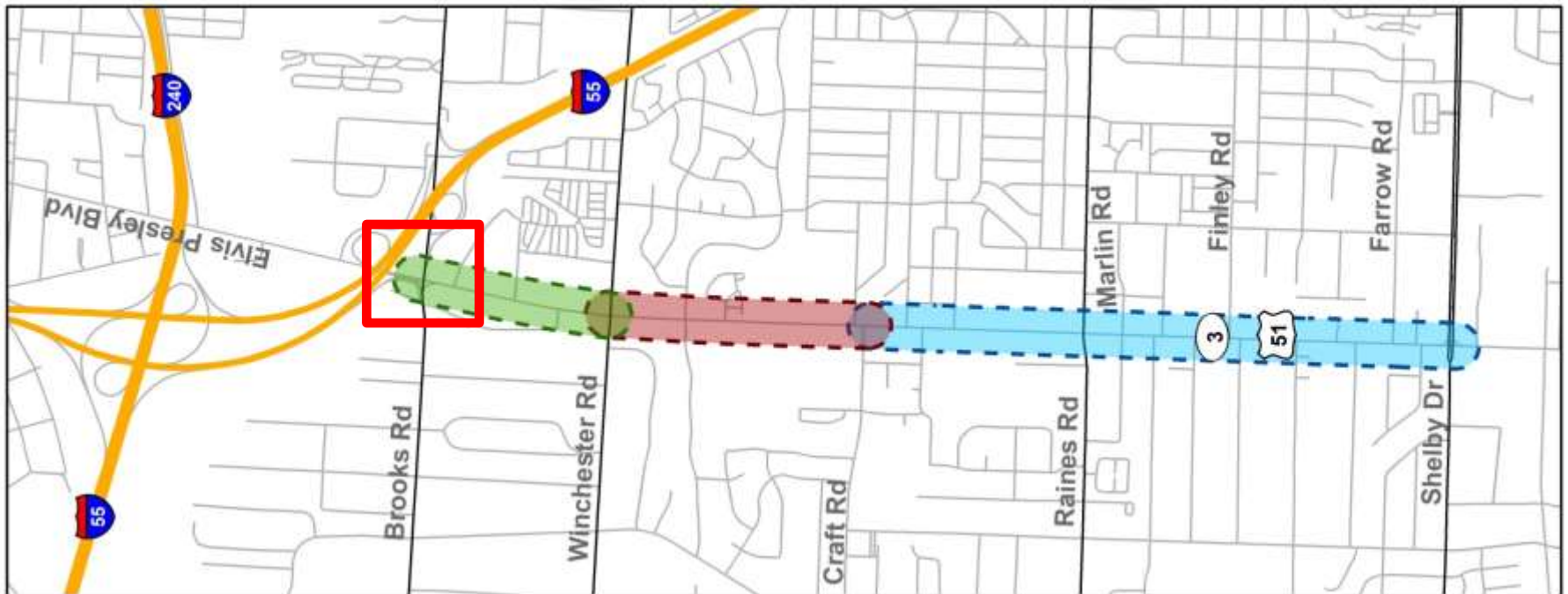


Elvis Presley Boulevard Improvements

City of Memphis, Tennessee



Brooks Road Intersection "Quick Start" Project



Elvis Presley Boulevard Improvements

City of Memphis, Tennessee



Aerial View of Intersection - 2012

Elvis Presley Boulevard Improvements

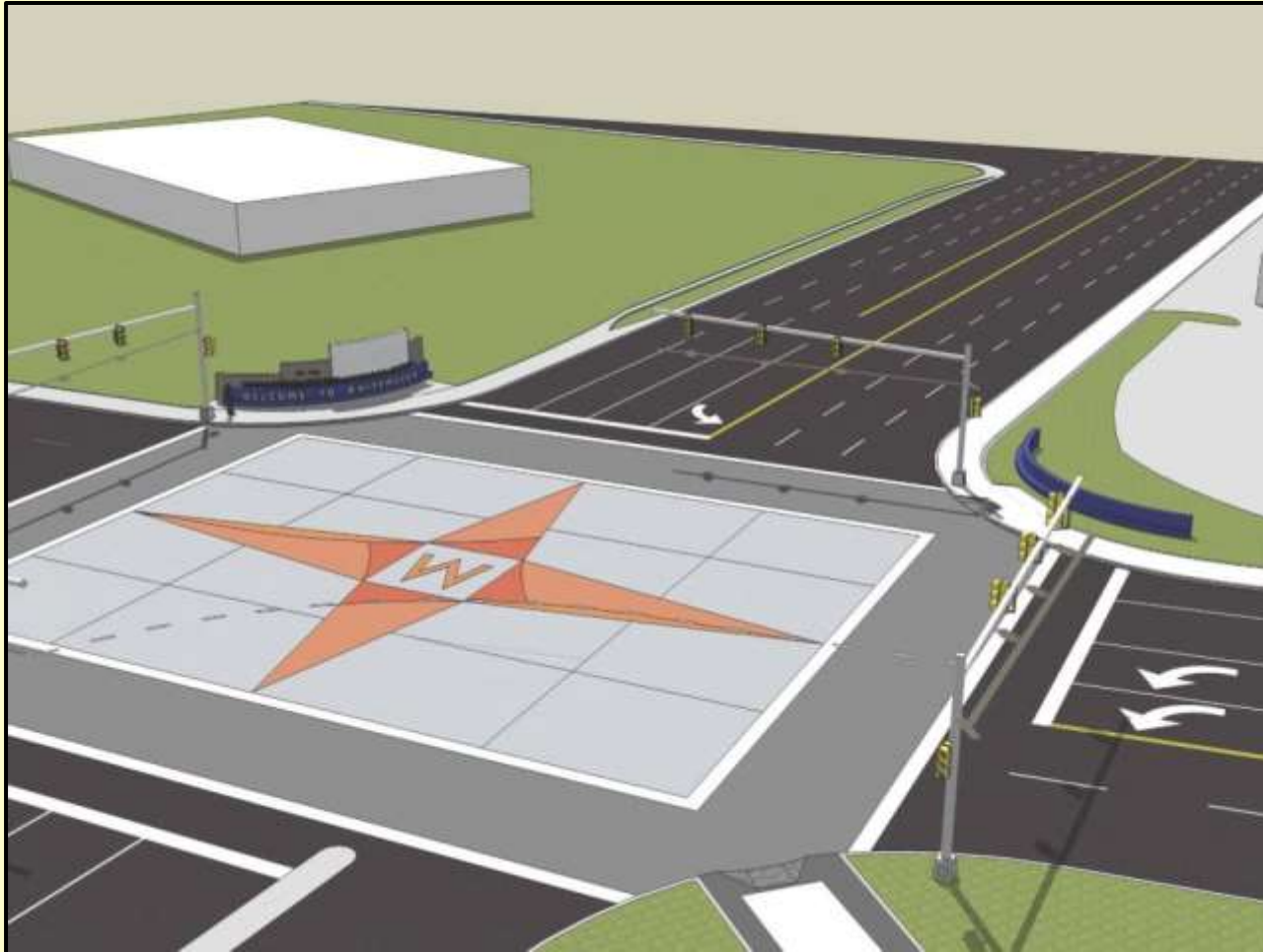
City of Memphis, Tennessee



Aerial View of Intersection - 2014

Elvis Presley Boulevard Improvements

City of Memphis, Tennessee



Brooks Intersection Treatment (Facing South)

Elvis Presley Boulevard Improvements

City of Memphis, Tennessee



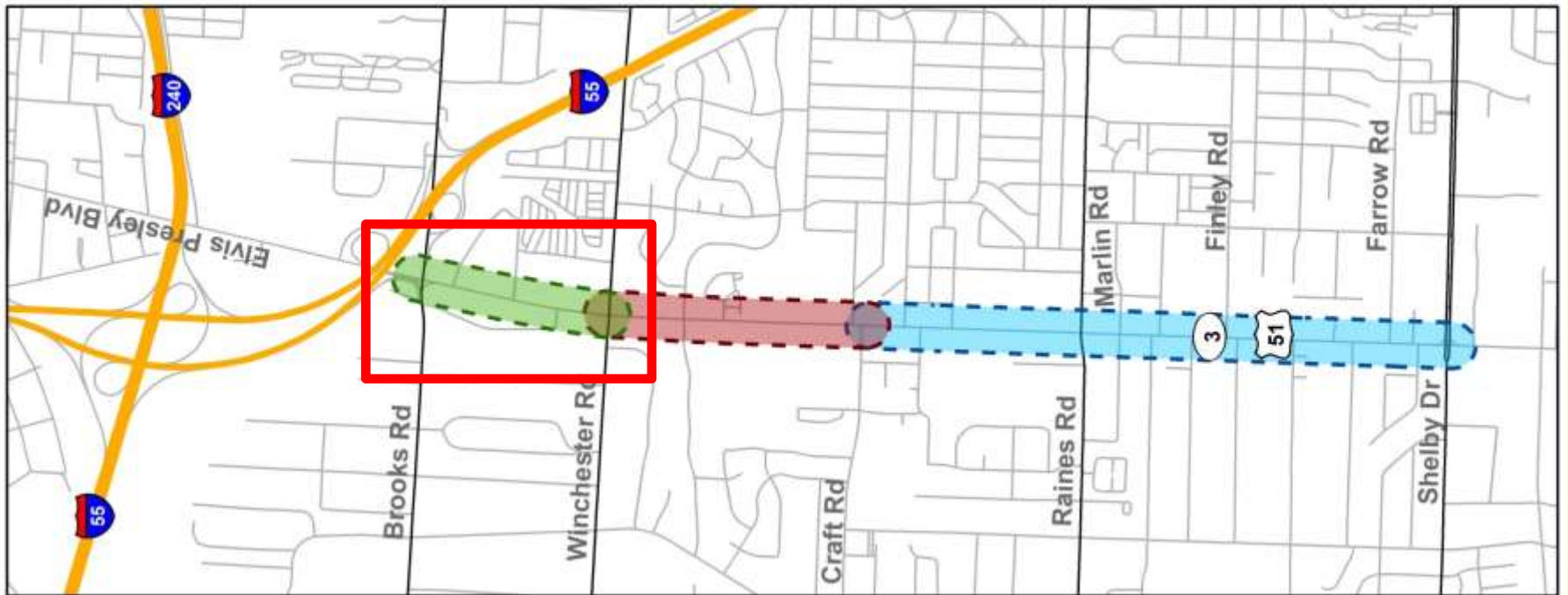
Shelby County Streetscape Project

Elvis Presley Boulevard Improvements

City of Memphis, Tennessee

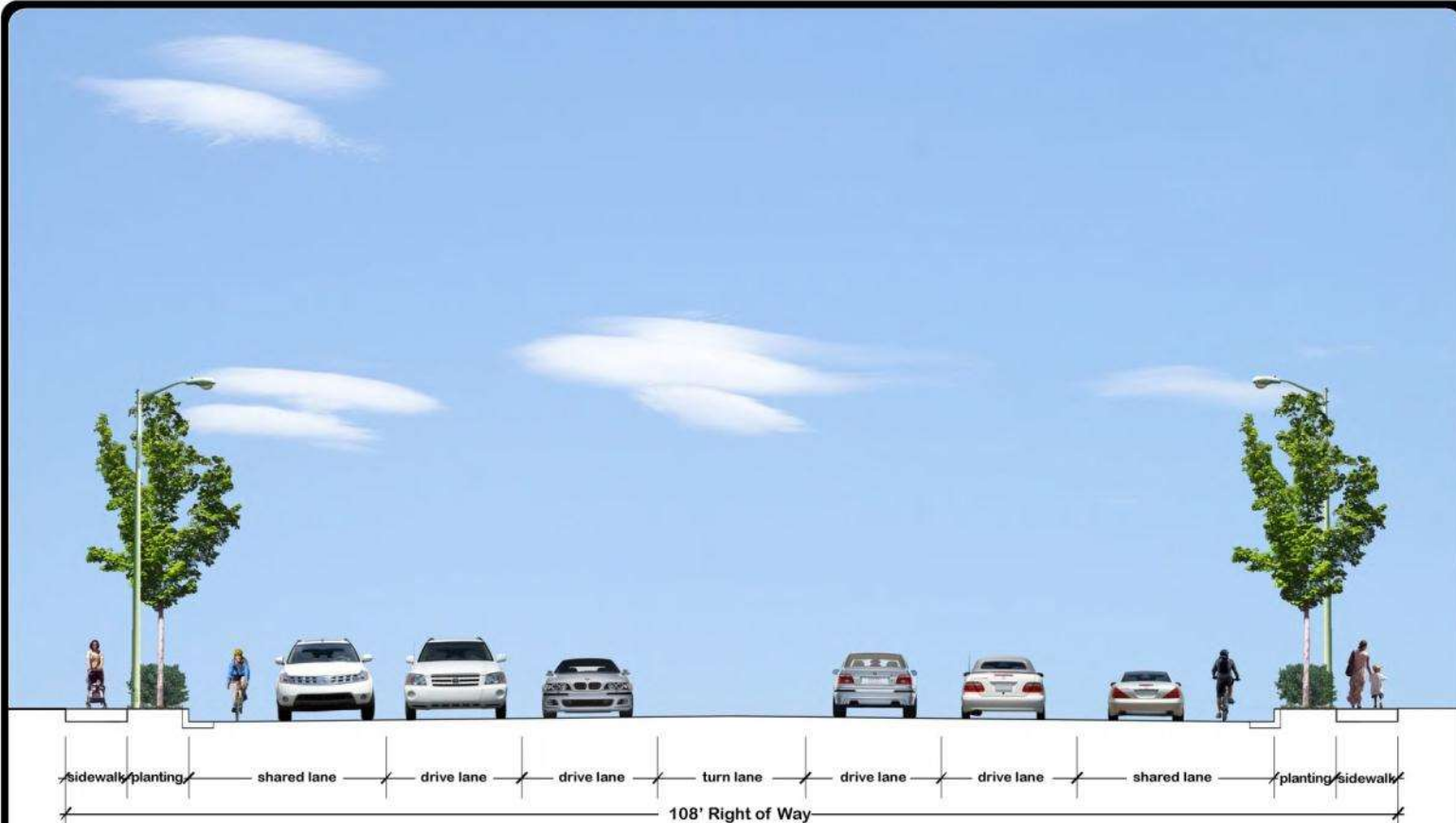



North Segment From Winchester Road to Brooks Road



Elvis Presley Boulevard Improvements

City of Memphis, Tennessee



 Kimley-Horn
and Associates, Inc.

Elvis Presley Boulevard - North Section

 City of
Memphis



Current Status - North Segment

1. Design Complete
2. Right-of-Way Acquisition from July 2014 – December 2014.
3. Construction beginning early 2015
4. Utility adjustments on side streets already completed by MLGW

Elvis Presley Boulevard Improvements

City of Memphis, Tennessee

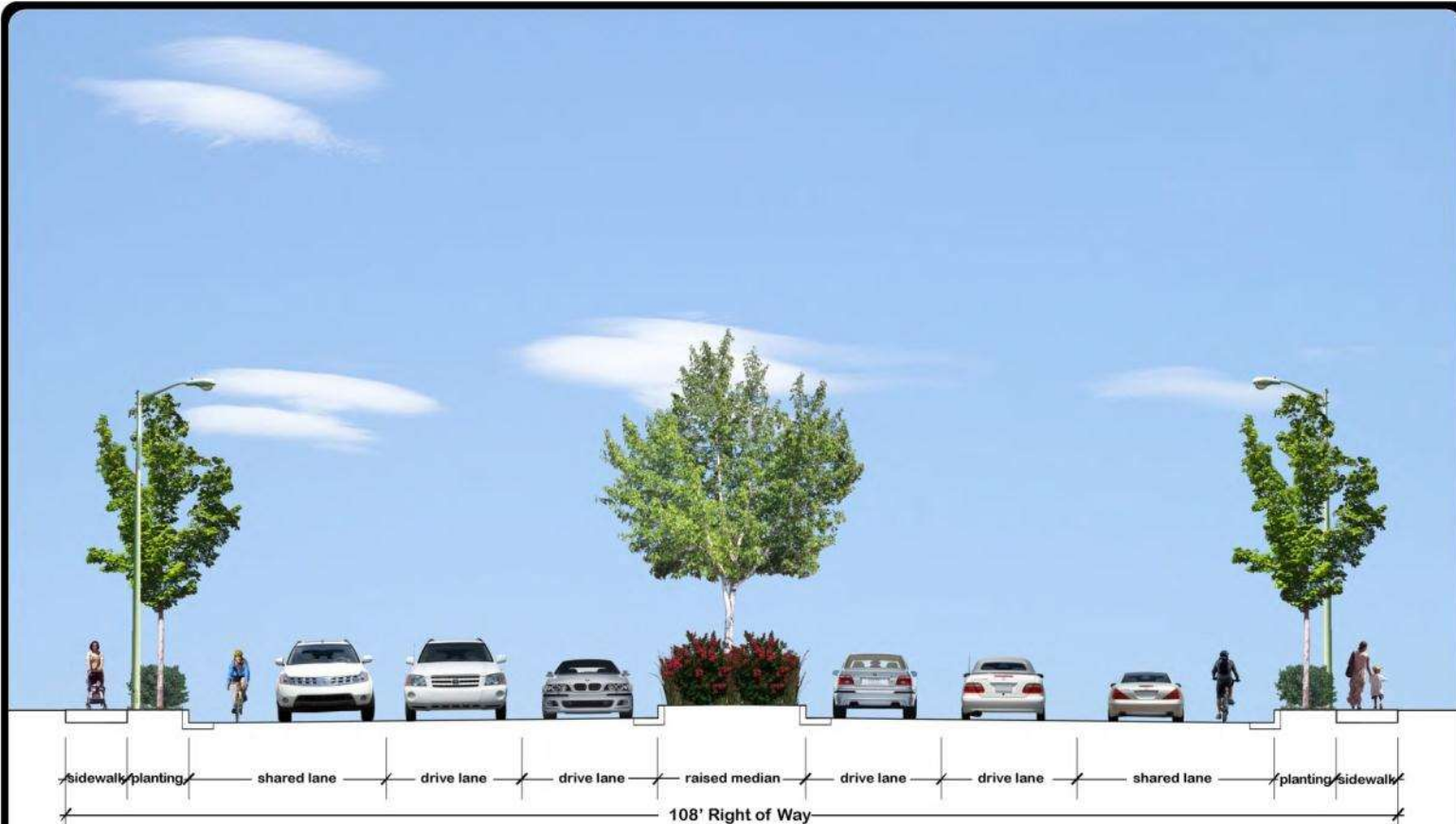



Middle Segment From Craft Road to Winchester Road



Elvis Presley Boulevard Improvements

City of Memphis, Tennessee



 Kimley-Horn and Associates, Inc.

Elvis Presley Boulevard - Middle Section

 City of Memphis



Current Status - Middle Segment

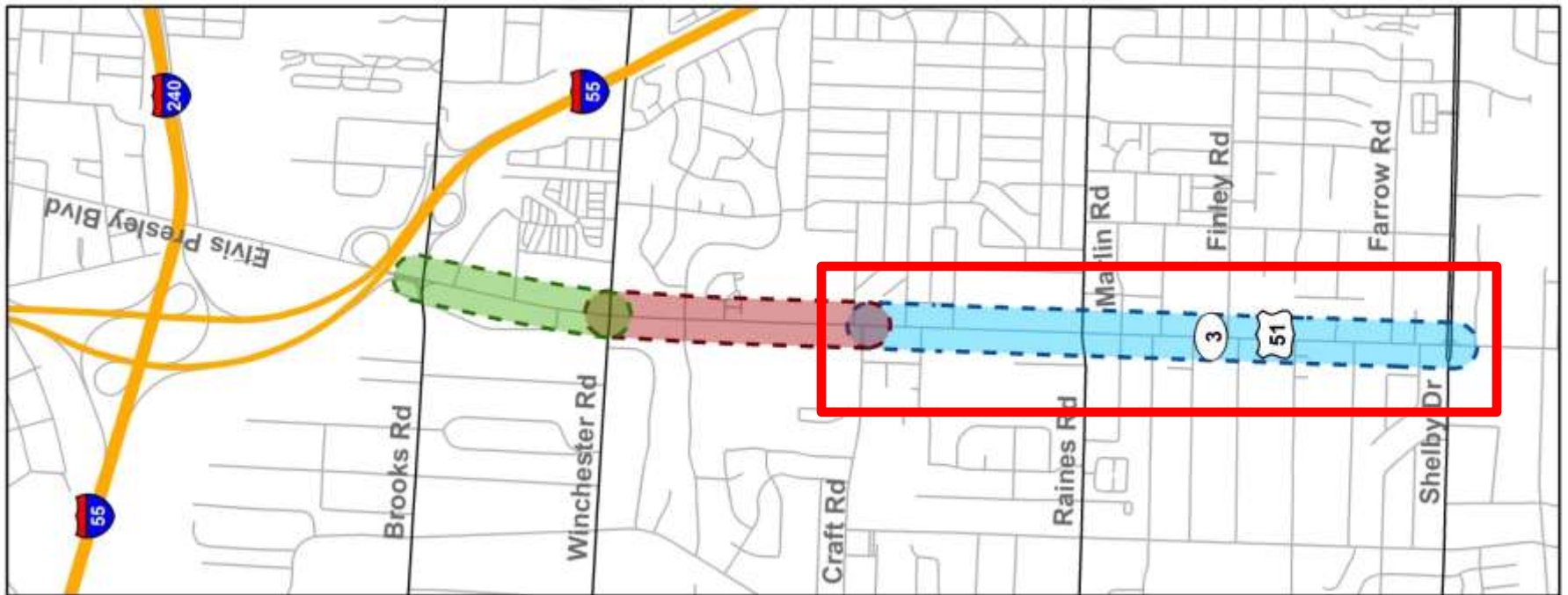
1. Design originally scheduled to begin in late 2014
2. Graceland Improvement plans have solidified, allowing us to move forward with this segment of the project.
3. We're already underway - anticipate 6 month design process
4. Right-of-Way acquisition planned to begin in 2015, following completion of North Segment Right-of-Way phase.
5. Construction could begin in mid to late 2015.

Elvis Presley Boulevard Improvements

City of Memphis, Tennessee

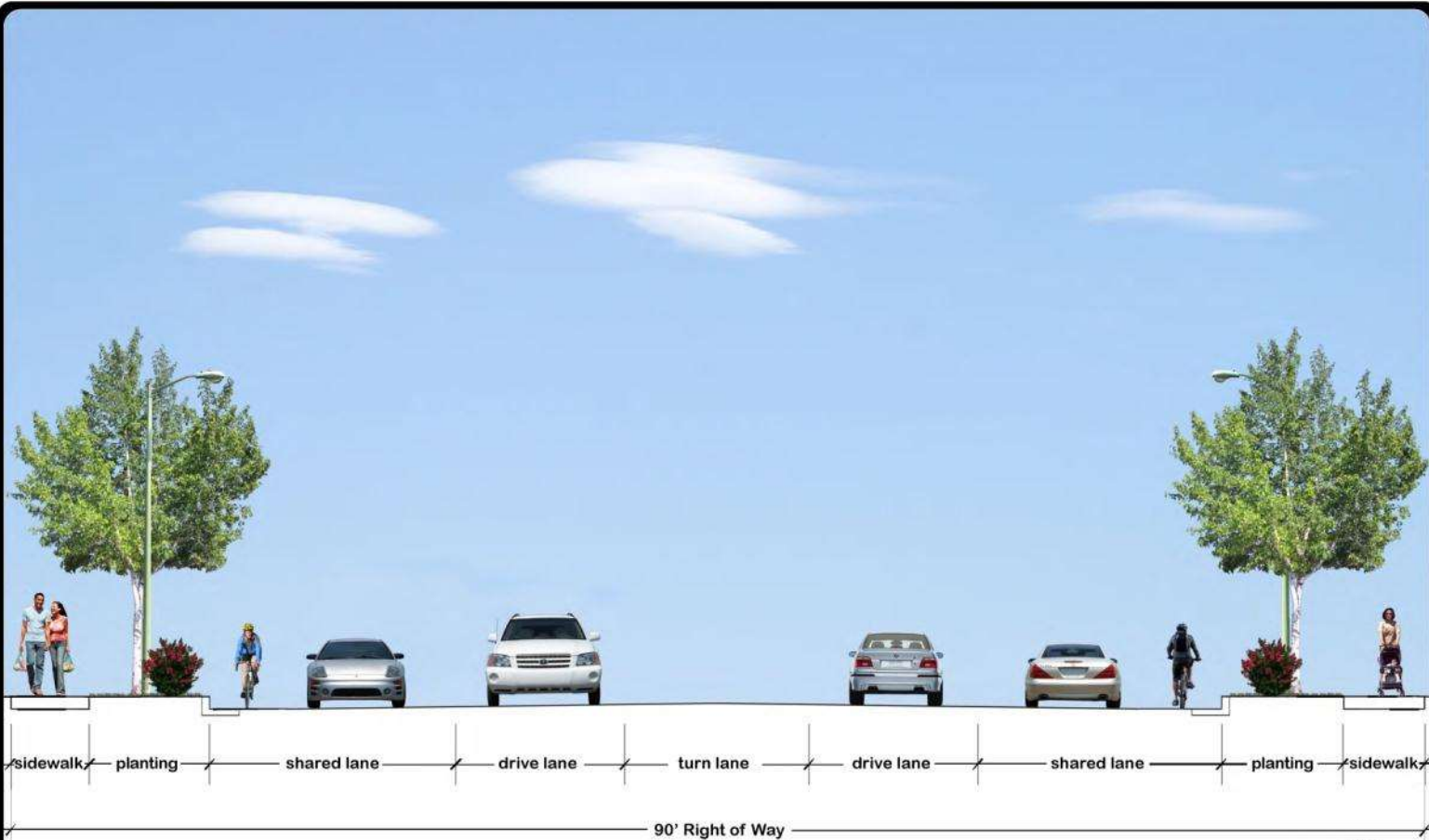



South Segment From Shelby Drive to Craft Road



Elvis Presley Boulevard Improvements

City of Memphis, Tennessee



 Kimley-Horn and Associates, Inc.

Elvis Presley Boulevard - South Section





Current Status - South Segment

1. Design 50% Complete
2. Challenges include storm drainage and large number of business entrances. There are over 100 driveways to accommodate in this segment alone.
3. Design work will continue at the same time as Middle Segment. We're not stopping work on any portion.
4. Right-of-Way acquisition planned for late 2015.
5. Construction planned to begin in 2016.

Elvis Presley Boulevard Improvements

City of Memphis, Tennessee



Thank You!

Thank you for joining us this evening at this important community meeting. If you have any questions, we would be happy to take them now.

www.epbmemphis.com